



NO PAIN NO STRAIN

bolle
SAFETY

SEE ALL
YOU CAN DO

PRO3LU

SUMMARY

4

BLUE LIGHT PROTECTION FOR ALL

8

INDUSTRIAL

- 10 HARPER
- 12 KICK & KICK OFFICE
- 13 SPICY OFFICE
- 14 B713
- 15 B806
- 16 B809

32

KIDS

- 34 MIAMI
- 35 DALLAS



6

BEYOND PROTECTION, ENSURING HEALTH AND WELLBEING

16

SCREENERS

- 18 WELLINGTON
- 19 LONDON
- 20 BARCELONA
- 22 VIENNA
- 23 LYON
- 24 ROMA
- 26 CHICAGO
- 28 TOKYO
- 29 TORONTO
- 30 OSLO

36

WHO WE ARE

38

INTERNATIONAL MARKINGS AND STANDARDS

WHY CHOOSE US



72-HOUR SHIPPING

Because doing your job at full capacity can't wait.



GLOBAL PRODUCTION CAPACITY

With 10 manufacturing plants around the world.



COMPLIANCE WITH INTERNATIONAL STANDARDS

Our Industrial product line complies with all global quality standards for safety eyewear while our other product lines' frames conform to the normative requirements of ophthalmic frame standards.



PREMIUM MATERIALS

Our products are made with the most durable and resistant materials on the market, acetate and metal frames along with polycarbonate lens.



LIFETIME GUARANTEE

Our embedded filtering technology is guaranteed to last for life.



CERTIFIED CONTROL

We retain total control over the quality and safety of the products we make. Our factories are ISO 9001 certified.



CONSTANT INNOVATION

We are constantly improving our eyewear to provide better protection for all people and generations worldwide.

BLUE LIGHT PROTECTION FOR ALL



PETER SMITH
BOLLÉ SAFETY
CEO



Computers, laptops, screens, televisions, or cell phones...

We're increasingly using digital devices worldwide with LED technologies that imply high amounts of blue light. This has become a growing concern for health over time and more specifically for sight. Whilst cutting down screen time may not be possible, we are convinced that reducing blue light exposure is.

After the creation of the B-Zen technology adapted to prescription lenses, Bollé Safety introduces its new line of blue blocker glasses available in plano, readers and soon in prescription, ProBlu, to improve visual comfort and optical clarity.

This range was developed with the most advanced embedded blue blocker lens technologies, ProBlu 420 and ProBlu 445, using polycarbonate lenses to guarantee a better product service life and prevent workers, screeners, kids, and gamers' vision from being damaged by harmful blue light.

As screen time is part of everyone's daily routines, ProBlu by Bollé Safety targets all of us playing interconnection between professionals and private lives. We know that PPE is no longer an option, that is why we are providing protective glasses adapted to everyone's needs.

At Bollé Safety, we believe that beyond safety concerns, blue light protective glasses are about improved physical and mental wellbeing, sharpening skills and allowing for accelerated decision-making : It's not just something that covers your eyes, it's what happens behind them. It's not a headset, it's a mindset.

Which is precisely why we make our products; so anyone, adults or kids, can carry on being great at what they do.

FROM RISK ASSESSMENT & HAZARDOUS CONDITIONS TO PERSONAL CONCERNS AND WELLBEING

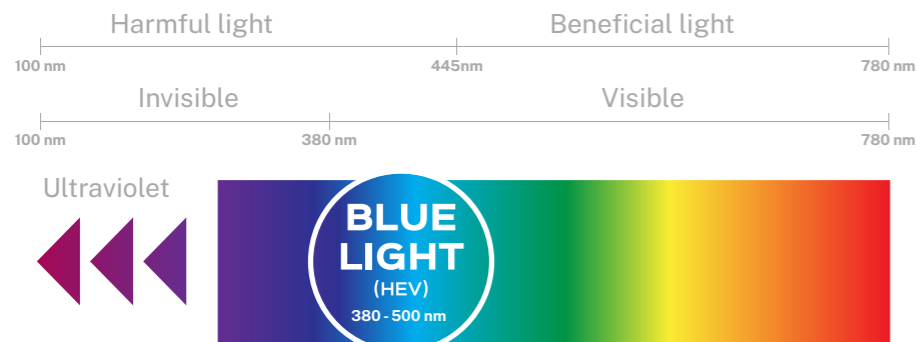
THE BENEFITS OF BLUE LIGHT FILTRATION

LIGHT SPECTRUM

WHITE LIGHT IS MADE UP OF ALL VISIBLE COLOURS; HOWEVER, THOSE AT THE BLUE END OF THE SPECTRUM, WHAT WE CALL BLUE LIGHT, CAN BE HARMFUL.

The human eye is only sensitive to a limited part of the spectrum, what we call visible light and see as colour. When visible light has longer wavelengths, and therefore lower energy, we see it as yellow, orange or red. Whereas colours with shorter wavelengths, like violet, indigo and blue, are at the other end of the visible spectrum.

We are surrounded by blue light. It occurs naturally within sunlight and decreases as the afternoon progresses. However, with artificial light, blue wavelengths do not decline but rather continue to illuminate the human environment long after sunset.



The light entering the eyes must be filtered for complete blue light protection. A high-quality blue light blocking glasses act as a personal blue light filter, protecting the wearer from all sources of blue light. These filtering glasses have already become popular with computer gaming enthusiasts who spend hours in front of the screen. However, it's not just gamers that could benefit, most people are exposed to potentially dangerous levels of blue light.

Office workers spend much of their day staring at a screen and are also being exposed to bright lighting that is rich in blue light. It is not just the office that exposes workers to dangerous levels of blue light; however, many other workplaces present similar problems. Workers in research laboratories, automotive plants, construction sites, retail stores, as well as oil, gas, mining and power facilities, face blue light from a variety of sources.

| BLUE LIGHT 380 - 500 NM | |
|--|---|
| <p>HARMFUL BLUE LIGHT 380-445 NM</p> <ul style="list-style-type: none"> -Contributing to digital eye strain -Potentially damaging the retina -Increasing the risk of eye diseases such as age-related macular degeneration (AMD)and cataracts... | <p>BENEFICIAL BLUE LIGHT 445-500 NM</p> <ul style="list-style-type: none"> -Regulating the circadian rhythm that controls the sleep-wake cycle -Boosting brain activity and improving memory, mood, alertness and mental performance |
| BLOCK IT | ENHANCING ITS TRANSMISSION |

Screen culture is here to stay but by adopting these simple solutions we can reduce the risks to vision as well as a host of other physical, mental and emotional disorders.

To protect yourself, your family and your employees, choose the protective measures that suit your needs and make sure you keep it up.

THE BLUE LIGHT ENVIRONMENT

10H

hours spent per day on digital devices by adults in 2021.



90%

Of employees say headaches affect their work performance. Only 1/3 tell their employers.



EYESTRAIN IS THE FIRST COMPLAINT of computer workers



50%

Of employees are bothered by light at work

33%

Of children use devices 3+ HOURS DAILY



Approximately

2.8

billion gamers in the world

87%

of millennials use 2 or more devices at the same time 9+ HOURS DAILY



BEYOND PROTECTION, ABSORBING 100% OF THE HARMFUL BLUE LIGHT UP TO 420 NM

BLUE LIGHT PROTECTION FOR ALL

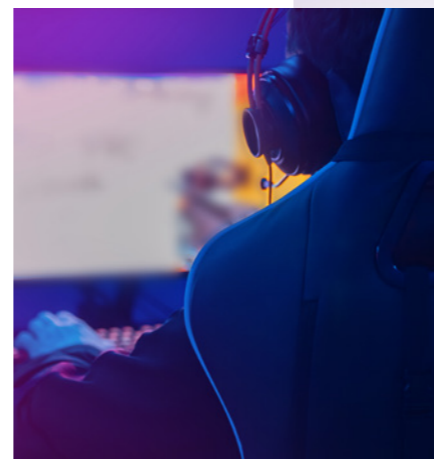
Our new ProBlu product range combines timeless & accessible eyewear made of the most advanced blue blocker lens technology: ProBlu⁴²⁰, and polycarbonate lens to prevent workers, screeners, kids &

gamer's vision being damaged by harmful blue light. This state-of-the-art protection is designed to make screen-time more comfortable, while providing you optimal vision even in the toughest conditions.



BLUE LIGHT FILTERING TECHNOLOGY

Our ProBlu⁴²⁰ embedded lens technology allows for the dispersed pigments to block blue light up to 420 nm. Combined with our blue anti-reflective coating applied to the inside of lens, the ProBlu⁴²⁰ product range absorbs 82% of the harmful blue light up to 445 nm, making your eyes always feel more comfortable.



THE PERFECT BALANCE BETWEEN CLARITY & FILTRATION



BLOCKING 100% OF THE HARMFUL BLUE LIGHT UP TO 420 NM & 100% OF UVA & UVB

PREMIUM FRAME QUALITY



QUITE CLEAR LENS TINT



INSIDE AR COATING FOR OPTICAL CLARITY



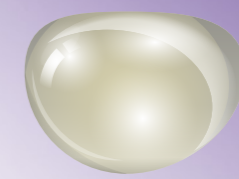
SCRATCH & IMPACT RESISTANT PC LENS



PROBLU⁴²⁰ IN-MASS LENS TECHNOLOGY

POLYCARBONATE LENS MATERIAL FOR ALL

Polycarbonate lenses are thin, lightweight, and incredibly impact resistant. They're the go-to lens material for safety glasses, and extremely versatile when it comes to combining them with features such as tint, photochromic, polarization, or other feature combinations. As the industry standard, polycarbonate lenses are affordable and inherently UV-protective. With an antireflective coating, polycarbonate lenses offer a good optical clarity.



PROBLU⁴²⁰

- + FILTERS MORE
- + THINNER & LIGHTER
- + MORE RESISTANT
- + LONGER LIFE TIME



THE ALLIANCE OF
PROTECTION AND COMFORT

INDUSTRIAL

ProBlu Industrial glasses are for anyone who sees their job as a labor of love, and protection as a must. Their state-of-the-art protection is designed to make screen-time more comfortable, while providing you optimal vision even in the toughest conditions. We provide the glasses. You provide the vision.





LIGHTNESS AND SIMPLICITY FOR OPTIMAL PROTECTION IN ALL WORK SITUATIONS

HARPER



WEIGHT

19 gr

SIZE

62 x 16 mm

KEY BENEFITS

- ✦ TR90 Frame
- ✦ Polycarbonate lens for resistance & optical clarity
- ✦ Embedded filtering technology
- ✦ Compliant to EN166 safety standards
- ✦ Supplied with an hard case, microfiber cloth, and user instruction

TECHNOLOGY

PROBLU⁴²⁰



A WORD FROM OUR EXPERTS

Rely on a full protection and almost forget you're wearing protective blue blocking glasses thanks to this lightweight and robust design. Not only does the Harper protect you against harmful blue light in all environments, it also comes with a scratch resistant hard coating to ensure long-lasting protection and efficiency throughout the day.

| STYLE | VERSION | REFERENCE | LENS TECHNOLOGY | FRAME MARKING | COATING |
|------------|-----------|------------|-----------------------|---------------|-----------|
| INDUSTRIAL | Grey-Blue | PXFHARP208 | PROBLU ⁴²⁰ | EN166 F CE | HARD COAT |





OPTIMUM EYE PROTECTION WITH
FLAWLESS COMFORT

KICK OFFICE



WEIGHT

KICK : 29 gr
KICK OFFICE : 24 gr

SIZE

54 x 19 mm

KEY BENEFITS

- ✦ TR90 Frame
- ✦ Polycarbonate lens for resistance & optical clarity
- ✦ Embedded filtering technology
- ✦ Compliant to EN166 safety standards
- ✦ Protective side shields available on the KICK
- ✦ Supplied with an hard case, microfiber cloth, and user instruction

TECHNOLOGY

PROBLU⁴²⁰



A WORD FROM OUR EXPERTS

Both unisex versions combine protection and performance to protect your vision from bluelight as well as the environment thanks to their compliance with international safety standards, and protective side shields provided on the KICK. Maintain the highest levels of productivity at work no matter the circumstances.



STYLISH AND COLORFUL, SAFETY NEVER
LOOKED SO GOOD

SPICY OFFICE



WEIGHT

24 gr

SIZE

53 x 19 mm

KEY BENEFITS

- ✦ TR90 Frame
- ✦ Polycarbonate lens for resistance & optical clarity
- ✦ Embedded filtering technology
- ✦ Compliant to EN166 safety standards
- ✦ Supplied with an hard case, microfiber cloth, and user instruction

TECHNOLOGY

PROBLU⁴²⁰



A WORD FROM OUR EXPERTS

This perfect combination of style and safety will ensure long-lasting comfort throughout the work day for all workers in the world. This unisex model comes with a robust frame that provides complete safety and optimal vision thanks to its PrB lens absorbing 80% of harmful bluelight at 445nm.

| MODEL | STYLE | VERSION | REFERENCE | LENS TECHNOLOGY | FRAME MARKING | COATING |
|-------------|------------|------------|------------|-----------------------|---------------|-----------|
| KICK | INDUSTRIAL | Black-Grey | PXFKICK109 | PROBLU ⁴²⁰ | EN166 F CE | HARD COAT |
| KICK OFFICE | INDUSTRIAL | Black-Grey | PXFOFKI109 | PROBLU ⁴²⁰ | EN166 S CE | HARD COAT |

| STYLE | VERSION | REFERENCE | LENS TECHNOLOGY | FRAME MARKING | COATING |
|------------|----------|------------|-----------------------|---------------|-----------|
| INDUSTRIAL | Tortoise | PXFOFSP605 | PROBLU ⁴²⁰ | EN166 S CE | HARD COAT |



CLASSIC METAL-FRAME FOR
A STRAIGHTFORWARD APPROACH

B713



WEIGHT

34 gr

SIZE

54 x 17 mm

KEY BENEFITS

- ✦ Classic metal frame
- ✦ Polycarbonate lens for resistance & optical clarity
- ✦ Embedded filtering technology
- ✦ Compliant to EN166 safety standards
- ✦ Supplied with an hard case, microfiber cloth, and user instruction

TECHNOLOGY

PROBLU⁴²⁰



A WORD FROM OUR EXPERTS

These glasses were designed to provide total protection against harmful bluelight and maximum comfort at the same time. Their light metal frame and classic design ensure protection and performance to the wearer. Fully focus on your task while relying on total safety throughout the day.

| STYLE | VERSION | REFERENCE | LENS TECHNOLOGY | FRAME MARKING | COATING |
|------------|---------|------------|-----------------------|---------------|-----------|
| INDUSTRIAL | ■ Grey | PXFB713207 | PROBLU ⁴²⁰ | EN166 S CE | HARD COAT |



EASILY ADOPTED PROTECTION COMBINING
STYLE AND COMFORT

B806



WEIGHT

32 gr

SIZE

54 x 17 mm

KEY BENEFITS

- ✦ TR90 Frame
- ✦ Polycarbonate lens for resistance & optical clarity
- ✦ Embedded filtering technology
- ✦ Compliant to EN166 safety standards
- ✦ Supplied with an hard case, microfiber cloth, and user instruction

TECHNOLOGY

PROBLU⁴²⁰



A WORD FROM OUR EXPERTS

Stay protected from harmful blue light in any of your work environments thanks to this robust trendy rectangular frame and adjustable thin temples. Slim and universal, this glasses will provide you with the ultimate protection in all circumstances.

| STYLE | VERSION | REFERENCE | LENS TECHNOLOGY | FRAME MARKING | COATING |
|------------|---------|------------|-----------------------|---------------|-----------|
| INDUSTRIAL | ■ Black | PXFB806108 | PROBLU ⁴²⁰ | EN166 S CE | HARD COAT |



THE ALLIANCE OF PROTECTION
AND EFFECTIVENESS

B809



WEIGHT

35 gr

SIZE

54 x 17 mm

KEY BENEFITS

- ✦ TR90 Frame
- ✦ Polycarbonate lens for resistance & optical clarity
- ✦ Embedded filtering technology
- ✦ Compliant to EN166 safety standards
- ✦ Protective side shields
- ✦ Supplied with an hard case, microfiber cloth, and user instruction

TECHNOLOGY

PROBLU⁴²⁰



A WORD FROM OUR EXPERTS

Discret and effective, these glasses will help you get the job done no matter the situations you're in. Coming with adjustable reinforced temples, non-slip nose bridge and built-in side shields, they will be the best option for anyone looking for discretion and performance on a daily basis.

| STYLE | VERSION | REFERENCE | LENS TECHNOLOGY | FRAME MARKING | COATING |
|------------|---------|------------|-----------------------|---------------|-----------|
| INDUSTRIAL | ■ Black | PXFB809108 | PROBLU ⁴²⁰ | 👑 EN166 F CE | HARD COAT |





WHEN STYLE AND PROTECTION COME TOGETHER

SCREENERS

ProBlu Screeners glasses will make your eyes feel more comfortable, letting them (and you) work how they are supposed to, even after staring at a screen all day (or night). Don't let anything stop you.

WWW.COMPHY.COM



TIMELESS AESTHETIC WITH A CLASSY AND ELEGANT TOUCH

WELLINGTON



WEIGHT

30 gr

SIZE

53 x 19 mm

TECHNOLOGY

PROBLU⁴²⁰

KEY BENEFITS

- ✦ Unisex square style
- ✦ Premium acetate frame
- ✦ Polycarbonate lens for resistance & optical clarity
- ✦ Embedded filtering technology + anti-reflective coating
- ✦ Available with diopeters
- ✦ Supplied with a box, case, microfiber cloth, and user instruction



A WORD FROM OUR EXPERTS

With vintage-inspired details, our iconic unisex silhouette is the perfect all-round pair of blue light protective glasses offering a timeless aesthetic. Elegant and classy, the frame is available in shiny translucent olive, shiny black or crystal to match all your styles.



SLEEK SHAPES AND SMOOTH LINES FOR CLASSIC FINISH

LONDON



WEIGHT

30 gr

SIZE

48 x 20 mm

TECHNOLOGY

PROBLU⁴²⁰

KEY BENEFITS

- ✦ Unisex round style
- ✦ Premium acetate frame
- ✦ Polycarbonate lens for resistance & optical clarity
- ✦ Embedded filtering technology + anti-reflective coating
- ✦ Available with diopeters
- ✦ Supplied with a box, case, microfiber cloth, and user instruction



A WORD FROM OUR EXPERTS

When style and protection come together, see all you can do. These unisex blue light protective glasses with a round shape are designed in gradient black and crystal, tortoise, shiny black and crystal for an elegant and classy aesthetic.

| STYLE | VERSION | REFERENCE | LENS TECHNOLOGY | FRAME MARKING | COATING |
|--------|-------------------------|------------|-----------------------|---------------|----------------|
| UNISEX | Crystal | PRBWELL200 | PROBLU ⁴²⁰ | CE UKCA | ANTIREFLECTIVE |
| UNISEX | Q+1 Crystal | PRBWELL20A | PROBLU ⁴²⁰ | CE UKCA | ANTIREFLECTIVE |
| UNISEX | Q+1,5 Crystal | PRBWELL20B | PROBLU ⁴²⁰ | CE UKCA | ANTIREFLECTIVE |
| UNISEX | Q+2 Crystal | PRBWELL20C | PROBLU ⁴²⁰ | CE UKCA | ANTIREFLECTIVE |
| UNISEX | Q+2,5 Crystal | PRBWELL20D | PROBLU ⁴²⁰ | CE UKCA | ANTIREFLECTIVE |
| UNISEX | Q+3 Crystal | PRBWELL20E | PROBLU ⁴²⁰ | CE UKCA | ANTIREFLECTIVE |
| UNISEX | Shiny Black | PRBWELL108 | PROBLU ⁴²⁰ | CE UKCA | ANTIREFLECTIVE |
| UNISEX | Q+1 Shiny Black | PRBWELL10A | PROBLU ⁴²⁰ | CE UKCA | ANTIREFLECTIVE |
| UNISEX | Q+1,5 Shiny Black | PRBWELL10B | PROBLU ⁴²⁰ | CE UKCA | ANTIREFLECTIVE |
| UNISEX | Q+2 Shiny Black | PRBWELL10C | PROBLU ⁴²⁰ | CE UKCA | ANTIREFLECTIVE |
| UNISEX | Q+2,5 Shiny Black | PRBWELL10D | PROBLU ⁴²⁰ | CE UKCA | ANTIREFLECTIVE |
| UNISEX | Q+3 Shiny Black | PRBWELL10E | PROBLU ⁴²⁰ | CE UKCA | ANTIREFLECTIVE |
| UNISEX | Shiny translucent Olive | PRBWELL204 | PROBLU ⁴²⁰ | CE UKCA | ANTIREFLECTIVE |

| STYLE | VERSION | REFERENCE | LENS TECHNOLOGY | FRAME MARKING | COATING |
|--------|----------------------------|------------|-----------------------|---------------|----------------|
| UNISEX | Crystal | PRBLOND200 | PROBLU ⁴²⁰ | CE UKCA | ANTIREFLECTIVE |
| UNISEX | Q+1 Crystal | PRBLOND20A | PROBLU ⁴²⁰ | CE UKCA | ANTIREFLECTIVE |
| UNISEX | Q+1,5 Crystal | PRBLOND20B | PROBLU ⁴²⁰ | CE UKCA | ANTIREFLECTIVE |
| UNISEX | Q+2 Crystal | PRBLOND20C | PROBLU ⁴²⁰ | CE UKCA | ANTIREFLECTIVE |
| UNISEX | Q+2,5 Crystal | PRBLOND20D | PROBLU ⁴²⁰ | CE UKCA | ANTIREFLECTIVE |
| UNISEX | Q+3 Crystal | PRBLOND20E | PROBLU ⁴²⁰ | CE UKCA | ANTIREFLECTIVE |
| UNISEX | Gradient Black and Crystal | PRBLOND204 | PROBLU ⁴²⁰ | CE UKCA | ANTIREFLECTIVE |
| UNISEX | Shiny Black | PRBLOND108 | PROBLU ⁴²⁰ | CE UKCA | ANTIREFLECTIVE |
| UNISEX | Q+1 Shiny Black | PRBLOND10A | PROBLU ⁴²⁰ | CE UKCA | ANTIREFLECTIVE |
| UNISEX | Q+1,5 Shiny Black | PRBLOND10B | PROBLU ⁴²⁰ | CE UKCA | ANTIREFLECTIVE |
| UNISEX | Q+2 Shiny Black | PRBLOND10C | PROBLU ⁴²⁰ | CE UKCA | ANTIREFLECTIVE |
| UNISEX | Q+2,5 Shiny Black | PRBLOND10D | PROBLU ⁴²⁰ | CE UKCA | ANTIREFLECTIVE |
| UNISEX | Q+3 Shiny Black | PRBLOND10E | PROBLU ⁴²⁰ | CE UKCA | ANTIREFLECTIVE |
| UNISEX | Tortoise | PRBLOND605 | PROBLU ⁴²⁰ | CE UKCA | ANTIREFLECTIVE |



SOPHISTICATED AND STYLISH,
THE MUST IN WOMEN'S WARDROBE

BARCELONA



WEIGHT

25 gr

SIZE

52 x 19 mm

TECHNOLOGY

PROBLU⁴²⁰

KEY BENEFITS

- ✦ Women style
- ✦ Hybride metal and acetate frame
- ✦ Polycarbonate lens for resistance & optical clarity
- ✦ Embedded filtering technology + anti-reflective coating
- ✦ Supplied with a box, case, microfiber cloth, and user instruction

CRYSTAL



SHINY BLACK AND GOLD



GRADIENT BLACK AND
CRYSTAL WITH GOLD



A WORD FROM OUR EXPERTS

This feminine style is designed with metal temples for a luxurious aesthetic. These blue light protective glasses are finished in shiny black and gold, crystal or gradient black and crystal with gold for an elegant and sophisticated look.

| STYLE | VERSION | REFERENCE | LENS TECHNOLOGY | FRAME MARKING | COATING |
|-------|--------------------------------------|------------|-----------------------|---------------|----------------|
| WOMEN | Shiny Black and Gold | PRBBARC108 | PROBLU ⁴²⁰ | CE UKCA | ANTIREFLECTIVE |
| WOMEN | Gradient Black and Crystal with Gold | PRBBARC204 | PROBLU ⁴²⁰ | CE UKCA | ANTIREFLECTIVE |
| WOMEN | Crystal | PRBBARC200 | PROBLU ⁴²⁰ | CE UKCA | ANTIREFLECTIVE |





URBAN SILHOUETTE
WITH A FEMININE FINISH

VIENNA



WEIGHT

27 gr

SIZE

53 x 17 mm

TECHNOLOGY

PROBLU⁴²⁰

KEY BENEFITS

- ✦ Women square style
- ✦ Premium acetate frame
- ✦ Polycarbonate lens for resistance & optical clarity
- ✦ Embedded filtering technology + anti-reflective coating
- ✦ Supplied with a box, case, microfiber cloth, and user instruction



A WORD FROM OUR EXPERTS

Protect your eyes from harmful blue light with our gradient blue and brown, or black VIENNA glasses. Bold and urban at the same time, this timeless women's style will provide you with the ultimate protection at all times.

| STYLE | VERSION | REFERENCE | LENS TECHNOLOGY | FRAME MARKING | COATING |
|-------|-------------------------|------------|-----------------------|---------------|----------------|
| WOMEN | Gradient navy and Brown | PRBVIEN204 | PROBLU ⁴²⁰ | CE UKCA | ANTIREFLECTIVE |
| WOMEN | Black | PRBVIEN108 | PROBLU ⁴²⁰ | CE UKCA | ANTIREFLECTIVE |



BOLD STATEMENT PIECE WITH
A TOUCH OF GLAMOUR

LYON



WEIGHT

25 gr

SIZE

53 x 17 mm

TECHNOLOGY

PROBLU⁴²⁰

KEY BENEFITS

- ✦ Cat-eye women style
- ✦ Premium acetate frame
- ✦ Polycarbonate lens for resistance & optical clarity
- ✦ Embedded filtering technology + anti-reflective coating
- ✦ Supplied with a box, case, microfiber cloth, and user instruction



A WORD FROM OUR EXPERTS

Looking for a style boost while making your eyes feel more comfortable staring at a screen all day (or night)? Choose our light tortoise or black cat eye women's glasses that combine boldness and style.

| STYLE | VERSION | REFERENCE | LENS TECHNOLOGY | FRAME MARKING | COATING |
|-------|----------------|------------|-----------------------|---------------|----------------|
| WOMEN | Light tortoise | PRBLYON605 | PROBLU ⁴²⁰ | CE UKCA | ANTIREFLECTIVE |
| WOMEN | Black | PRBLYON108 | PROBLU ⁴²⁰ | CE UKCA | ANTIREFLECTIVE |



FASHIONABLE, CLASSY AND VINTAGE
DESIGN FOR A MYSTERIOUS LOOK

ROMA



WEIGHT

25 gr

SIZE

52 x 17 mm

KEY BENEFITS

- ✦ Women style
- ✦ Lightweight metal frame
- ✦ Polycarbonate lens for resistance & optical clarity
- ✦ Embedded filtering technology + anti-reflective coating
- ✦ Supplied with a box, case, microfiber cloth, and user instruction

TECHNOLOGY

PROBLU⁴²⁰



A WORD FROM OUR EXPERTS

This vintage and feminine round shape silhouette is designed with a shiny brown and rose gold metal frame for a chic and sophisticated look. Add a modern twist to your everyday outfits with these retro-style glasses.

| STYLE | VERSION | REFERENCE | LENS TECHNOLOGY | FRAME MARKING | COATING |
|-------|---------------------------|------------|-----------------------|---------------|----------------|
| WOMEN | Shiny Brown and Pink Gold | PRBROMA200 | PROBLU ⁴²⁰ | CE UKCA | ANTIREFLECTIVE |





A DASH OF COMFORT WITH SOPHISTICATED
AND DISTINCTIVE FASHION STYLE

CHICAGO



WEIGHT

28 gr

SIZE

53 x 19 mm

TECHNOLOGY

PROBLU⁴²⁰

KEY BENEFITS

- ✦ Square men style
- ✦ Hybride metal and acetate frame
- ✦ Polycarbonate lens for resistance & optical clarity
- ✦ Embedded filtering technology + anti-reflective coating
- ✦ Supplied with a box, case, microfiber cloth, and user instruction

CRYSTAL AND GUNMETAL



BLACK AND GUNMETAL



GRADIENT BLACK AND
CRYSTAL WITH GUNMETAL



A WORD FROM OUR EXPERTS

Adopt these sophisticated and stylish glasses for a timeless look all day (and night). The frame comes in black, crystal, or gradient black combined with gunmetal temples.

| STYLE | VERSION | REFERENCE | LENS TECHNOLOGY | FRAME MARKING | COATING |
|-------|--|------------|-----------------------|---------------|----------------|
| MEN | Gradient Black and Crystal with Gunmetal | PRBCHIC204 | PROBLU ⁴²⁰ | CE UKCA | ANTIREFLECTIVE |
| MEN | Crystal and Gunmetal | PRBCHIC200 | PROBLU ⁴²⁰ | CE UKCA | ANTIREFLECTIVE |
| MEN | Black and Gunmetal | PRBCHIC108 | PROBLU ⁴²⁰ | CE UKCA | ANTIREFLECTIVE |





MINIMAL METAL FRAME WITH
PLEASING SIMPLICITY

TOKYO



WEIGHT

24 gr

SIZE

54 x 18 mm

TECHNOLOGY

PROBLU⁴²⁰

KEY BENEFITS

- ✦ Men square style
- ✦ Lightweight metal frame
- ✦ Polycarbonate lens for resistance & optical clarity
- ✦ Embedded filtering technology + anti-reflective coating
- ✦ Supplied with a box, case, microfiber cloth, and user instruction



A WORD FROM OUR EXPERTS

This classic and minimalist square shape style is designed with a shiny black and gunmetal frame. Its lightweight and thin temples will allow you to wear the glasses in all circumstances without having to worry about it.

| STYLE | VERSION | REFERENCE | LENS TECHNOLOGY | FRAME MARKING | COATING |
|-------|--------------------------|------------|-----------------------|---------------|----------------|
| MEN | Shiny Black and Gunmetal | PRBTOKY108 | PROBLU ⁴²⁰ | CE UKCA | ANTIREFLECTIVE |



URBAN STYLE WITH BOLD
AND TIMELESS FEEL

TORONTO



WEIGHT

27 gr

SIZE

53 x 19 mm

TECHNOLOGY

PROBLU⁴²⁰

KEY BENEFITS

- ✦ Men square style
- ✦ Premium acetate frame
- ✦ Polycarbonate lens for resistance & optical clarity
- ✦ Embedded filtering technology + anti-reflective coating
- ✦ Supplied with a box, case, microfiber cloth, and user instruction



A WORD FROM OUR EXPERTS

Featuring our bold and urban rectangular frame, the TORONTO silhouette in its translucent grey or black designs offers you bluelight protection while staying brilliant and elegant.

| STYLE | VERSION | REFERENCE | LENS TECHNOLOGY | FRAME MARKING | COATING |
|-------|------------------|------------|-----------------------|---------------|----------------|
| MEN | Translucent Grey | PRBTORO204 | PROBLU ⁴²⁰ | CE UKCA | ANTIREFLECTIVE |
| MEN | Black | PRBTORO108 | PROBLU ⁴²⁰ | CE UKCA | ANTIREFLECTIVE |



**BOLD AND TRENDY DESIGN COMBINED
WITH TIMELESS LINES**

OSLO



WEIGHT

26 gr

SIZE

53 x 18 mm

TECHNOLOGY

PROBLU⁴²⁰

KEY BENEFITS

- ✦ Vintage men style
- ✦ Hybrid metal and acetate frame
- ✦ Polycarbonate lens for resistance & optical clarity
- ✦ Embedded filtering technology + anti-reflective coating
- ✦ Supplied with a box, case, microfiber cloth, and user instruction

MATT BLACK AND
TRANSLUCENT TORTOISE



MATT BLACK AND
TRANSLUCENT GREY



A WORD FROM OUR EXPERTS

This bold silhouette features a vintage inspired design to protect your eyes from blue light. Bold and trendy, this frame comes in matte black and translucent grey or matt black and translucent tortoise.

| STYLE | VERSION | REFERENCE | LENS TECHNOLOGY | FRAME MARKING | COATING |
|-------|---------------------------------------|------------|-----------------------|---------------|----------------|
| MEN | ■ Matt Black and translucent Tortoise | PRBOSLO100 | PROBLU ⁴²⁰ | ☞ CE UKCA | ANTIREFLECTIVE |
| MEN | ■ Matt Black and translucent Grey | PRBOSLO108 | PROBLU ⁴²⁰ | ☞ CE UKCA | ANTIREFLECTIVE |





THEY HAVE
SO MUCH TO SEE

KIDS

Today's kids are doing things online that adults ten years ago could only dream about. That's why Bollé Safety designed a whole new line of ProBlu glasses just for them. They keep those precious eyes comfortable during screen time and come with the same anti-glare and scratch-resistant innovations found on all Bollé Safety products. Because learning has no boundaries.



THE PERFECT COMBINATION BETWEEN
STYLE AND COMFORT

MIAMI



WEIGHT

18 gr

SIZE

47 x 18 mm

TECHNOLOGY

PROBLU⁴²⁰

KEY BENEFITS

- ✦ Unisex round shape
- ✦ Resistant TR90 Frame
- ✦ Polycarbonate lens for resistance & optical clarity
- ✦ Embedded filtering technology + anti-reflective coating
- ✦ Supplied with a box, case, microfiber cloth, and user instruction

CRYSTAL AND MATT RED



CRYSTAL AND MATT RED



A WORD FROM OUR EXPERTS

Because screen exposure is more and more common at all ages, protect your children's eyesight with our pair of blue light protection glasses for kids. Combining style and comfort, the MIAMI glasses come in matte black or crystal with red temples.

| STYLE | VERSION | REFERENCE | LENS TECHNOLOGY | FRAME MARKING | COATING |
|-------|------------------------|------------|-----------------------|---------------|----------------|
| KIDS | ■ Matt Black and Red | PRBMIAM108 | PROBLU ⁴²⁰ | CE UKCA | ANTIREFLECTIVE |
| KIDS | ■ Crystal and Matt Red | PRBMIAM204 | PROBLU ⁴²⁰ | CE UKCA | ANTIREFLECTIVE |



FIFTY SHADES OF BLUE

DALLAS



WEIGHT

19 gr

SIZE

46 x 17 mm

TECHNOLOGY

PROBLU⁴²⁰

KEY BENEFITS

- ✦ Unisex round shape
- ✦ Resistant TR90 Frame
- ✦ Polycarbonate lens for resistance & optical clarity
- ✦ Embedded filtering technology + anti-reflective coating
- ✦ Supplied with a box, case, microfiber cloth, and user instruction



A WORD FROM OUR EXPERTS

Because screen exposure is more and more common at all ages, protect your children's eyesight with our pair of blue light protection glasses for kids. Our blue gradient tortoise frame is the perfect combination between style and comfort.

| STYLE | VERSION | REFERENCE | LENS TECHNOLOGY | FRAME MARKING | COATING |
|-------|-------------------------|------------|-----------------------|---------------|----------------|
| KIDS | ■ Crystal Blue tortoise | PRBDALL108 | PROBLU ⁴²⁰ | CE UKCA | ANTIREFLECTIVE |

130+ YEARS OF EYEWEAR INNOVATION TO EMPOWER USERS

THE JOURNEY OF BOLLÉ SAFETY IS INEXTRICABLY LINKED TO THAT OF ITS MOTHER COMPANY. THROUGHOUT TIME, ONE THING NEVER CHANGED: OUR CAPACITY TO LEVERAGE TECHNOLOGICAL EVOLUTIONS TO CONSTANTLY BRING INNOVATIONS TO MARKET, FUELED BY AN UNWAVERING COMMITMENT TO PROTECTING THE EYES OF WORKERS TO HELP THEM BE GREAT AT WHAT THEY DO.

1888

CREATION OF BOLLÉ IN OYONNAX

This area of the Jura mountains was the cradle of the plastics industry in France. Bollé originally produced combs and hair accessories.

1936

FIRST BOLLÉ SUNGLASSES & CROWN SYMBOL

The company launches celluloid frames and its first sunglasses. Maurice & Robert Bollé become known as "the kings of glasses" and create the crown symbol, engraved on all the brand's glasses ever since, symbol of quality and innovation.

1950

FIRST PROTECTION GOGGLES

The first series of protective masks and goggles for industrial use completes the Bollé line of products as early as 1950.

1973

FIRST ANTI-FOG COATINGS

Bollé's constant efforts to create innovative products lead to the development of its first anti-fog coatings, a technological breakthrough.



1981 PRESCRIPTION PROGRAMME LAUNCH

A wide range of safety spectacles with prescription lenses become available, for those who need vision correction while enjoying maximum protection for their eyes.

1994

CREATION OF BOLLÉ SAFETY

Bollé Safety is launched as a new division and brand. After decades of growth and synergy with Bollé while developing its own distribution network, Bollé Safety gains its independence.

2000

BOLLÉ SAFETY GOES WORLDWIDE

With products distributed in over 100 countries and worn by 20 million workers globally, Bollé Safety opens representations in Japan, the USA, Latin America and Hong Kong.

2014

OUR EYEWEAR GOES PLATINUM

To ensure optimal and enduring vision in all situations, Bollé Safety launches PLATINUM, an exclusive anti-scratch and anti-fog coating applied on both sides of the lens.

2015

LAUNCH OF THE CO-BRANDING PROGRAM

Bollé Safety is one of the first manufacturers to offer co-branding to its customers, creating products that look just like them.

2017 LAUNCH OF THE EXCELLENCE PRESCRIPTION PROGRAM & ITS DIGITALIZATION

A ready-to-use solution for prescription safety eyewear and for businesses of all sizes.

2019

LAUNCH OF THE SUSTAINABILITY 'GO GREEN' PLAN

Bollé Safety develops co-conscious projects for the greatest benefits of both our customers and the planet.

2020

DEVELOPMENT OF THE HEALTHCARE RANGE

Protective eyewear developed in response to COVID-19, so healthcare workers can rely on their PPE to stay as efficient as possible and concentrate on saving lives.

2021

LAUNCH OF BOLLÉ SAFETY STANDARD ISSUE

A new range dedicated to the men and women who protect us, engineered for First responders, Shooting, Law enforcement & Military.

LAUNCH OF PROBLU

A new range of protective and stylish eyewear protecting users against radiations from screens.

PROTECTING EYES ACROSS SECTORS

ENSURE TOTAL PROTECTION WHILE ENJOYING OPTIMAL VISION, ACROSS ALL INDUSTRIAL ACTIVITIES AND BEYOND.

BLUE LIGHT PROTECTION FOR:

 INDUSTRIALS

 SCREENERS

 GAMERS

 KIDS

COVERING OTHER NEEDS:

INDUSTRIAL

From automotive to construction, energy, mining and food processing, we focus on providing effective protection in compliance with international standards for every type of activity.

TACTICAL

Bollé Safety's Standard Issue division aims to be a leader in the tactical market by providing innovative and reliable protective eyewear to first responders, military personnel, law enforcement and more.

PRESCRIPTION

Our prescription safety spectacles provide your employees with both increased eye safety and optimal vision. They are also comfortable and desirably designed, so that they will be happy to wear them.

HEALTHCARE

Healthcare professionals need to enjoy perfect vision while donning complete safety equipment. Thanks to our protective eyewear, they can perform their daily tasks with total comfort and peace of mind.

CLEANROOMS

Our protective Cleanroom goggles are an effective addition to workers' equipment in industries such as electronics, pharmaceuticals, food processing and medical equipment to limit airborne contamination from workers and maintain cleanliness levels compliant with regulatory standards.

INTERNATIONAL MARKINGS AND STANDARDS

BOLLÉ SAFETY EYEWEAR BEARS LENS AND FRAME MARKINGS THAT ARE SPECIFIC TO EACH PRODUCT. EVERY MARKING IS RELATED TO A PARTICULAR USE AND PROVIDES INFORMATION THAT IS CERTIFIED AND TESTED BY INDEPENDENT LABORATORIES, THUS GUARANTEEING THE QUALITY AND RESISTANCE OF YOUR PROTECTIVE EYEWEAR.

FOR MORE INFORMATION ABOUT A SPECIFIC PRODUCT, PLEASE REFER TO THE PRODUCT'S MARKINGS.

EUROPEAN STANDARDS

EN166

Guarantee of minimum protection against common risks (dropping, sun-ageing, heat exposure, corrosion, etc.).

FRAME MARKING

The frame markings must include the CE symbol and the manufacturer's identification (logo or brand). If the spectacles refer to the EN standard, the EN standard number is mandatory, along with the various use and mechanical strength symbols, in accordance with the tests requested by the manufacturer.

Use symbols:

F. Low energy impact, resists a 6 mm, 0.86 g ball at 45 m/s.
T. The letter T immediately after the mechanical strength symbol authorises use in an environment where high speed particles at extreme temperatures are present.
 CE European standard

LENS MARKING

The lens markings must include:

-The scale number for filtering lenses (code).
 -The manufacturer's name (logo or brand).

Optical class symbols:

1. Continuous work - Worn permanently.

Mechanical strength symbols:

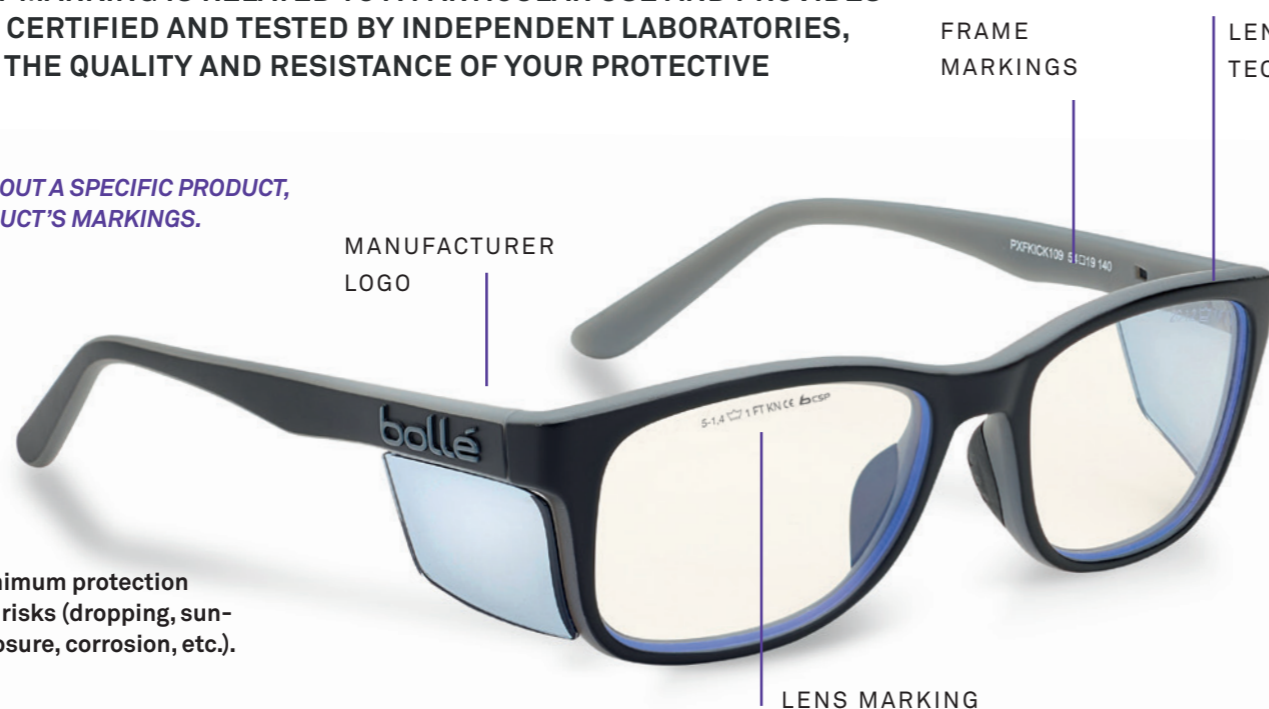
F. Low energy impact, resists a 6 mm, 0.86 g ball at 45 m/s
 Maximum protection for glasses.
T. The letter T immediately after the mechanical strength symbol authorises use in an environment where high speed particles at extreme temperatures are present.

Other symbols:

K. Resistance to surface damage from fine particles (optional).
N. Resistance to fogging (optional).
 CE European standard

UK CA

The UKCA (UK Conformity Assessed) marking is a new marking used for goods sold on the market in Great Britain (England, Wales and Scotland). It covers most goods which previously required the CE marking.



NORTH AMERICAN STANDARDS

ISEA/ ANSI-Z87.1-2015 STANDARDS

What is the assessment of occupational hazards?

The assessment of occupational hazards involves identifying and ranking workplace hazards in order to implement relevant protective measures. It is the first step in occupational health and safety, which is why it's essential to check adequacy between product markings and standard markings.

ANSI:

Guaranteed minimum resistance of the protective eyewear against common risks including dropping the eyewear onto the ground, ageing due to light exposure, exposure to heat or corrosion, etc. Maximum protection for glasses. Required for high-speed particles at extreme temperatures.

LENS & FRAME MARKINGS:

Z87+ = Impact rated for Plano product.
 Tested and approved to ANSI Z81.1-2015.

ASIA PACIFIC STANDARDS

AS/NZS 13371:2010

Australia/New Zealand standard

for personal eye and face protection for occupational applications. The AS/NZS 13371:2010 standard specifies the minimum requirements for non-prescription eye and face protectors and associated oculars.

Standard AS/NZS 13371:2010 also defines the basic characteristics to which all eye protections must conform with regards to coverage, optical quality and minimum strength.

While all eye protections must comply with AS/NZS 13371:2010, all filters and equipment are also covered by specific standards which must be understood in order to ensure the protective equipment is adapted to the activity of its wearer.

The AS/NZS 13371:2010 standard applies to all eye protections and guarantees adequate markings and the quality of the equipment.

Its purpose is to guarantee protection from:

- Impacts with varying degrees of severity
- Flying particles and fragments
- Dust
- Splashing materials
- Molten metals
- Harmful gases
- Vapours and aerosols
- Or any combination of these

Bollé Safety designs and markets personal protective equipment for eye protection for industrial use consistent with the AS/NZS 13371:2010 standards. Each marking corresponds to a very specific use.

All Bollé Safety products are tested at 23°C and 60°C according to the AS/NZS 13371:2010 standard. Tested by independent laboratories, certified by accredited bodies (BSI, SAI Global and others), this information guarantees the quality and resistance of your protective eyewear.

Bollé Safety strives to develop and provide high quality products for the health and safety of its customers. All Bollé Safety products are tested and approved to AS/NZS 13371:2010 for Medium Impact Protection.

FRAME MARKINGS

AS/NZS 13371:2010 Product has been tested and approved to Australian standards. Medium impact protection: resists a 6mm ball at 45 m/s.

LENS MARKINGS

Lens markings must include:

- The manufacturer's name or identification
- The ocular marking
- Other appropriate markings

Impact resistance:

I or F. Medium energy impact, resists a 6 mm ball at 45 m/s.

Special performance requirements:

O. Range of luminous transmittance 80-100% (clear)

CANADIAN STANDARDS

CSA Z94.3

Applies to eyewear and face protectors used in all occupational and educational operations involving hazards to the eye and face. CSA Z94.3

is a proof of guaranteed minimum resistance of the protective eyewear against common risks including flying particles, heat, sparks, splashes, UV rays, molten metal, etc.



THE GUARANTEE OF BOLLÉ SAFETY PRODUCT AUTHENTICITY AND QUALITY.

EUROPE / BOLLÉ SAFETY

34, rue de la Soie
69100 Villeurbanne
France
Tel: 00 33 (0)4 78 85 23 64
E-mail: contact@bolle-safety.com

UK & IRELAND / BOLLÉ SAFETY

Unit C83 - Barwell Business Park
Leatherhead Road - Chessington
Surrey - KT9 2NY - UK
Tel. 00 44 (0)208 391 4700
Fax: 00 44 (0)208 391 4733
E-mail: sales@bolle-safety.co.uk

