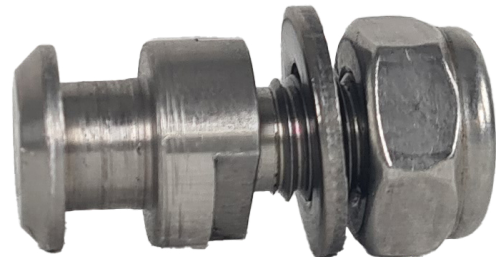
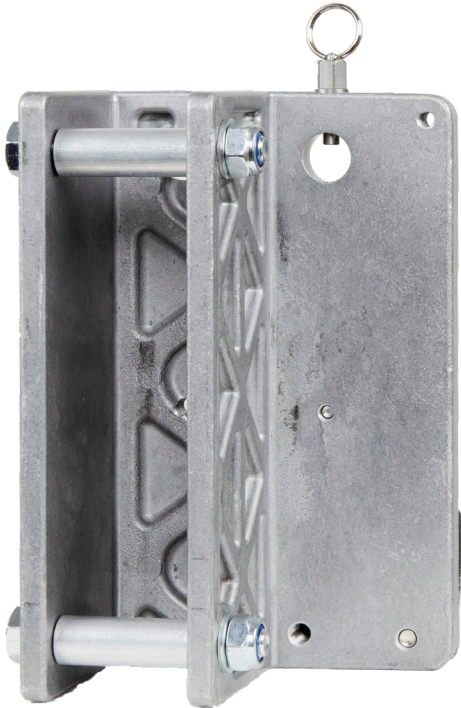


Mounting bracket for winch



Informationen:

Order.-No.:	Material	Diameter (LxBxT)	Weight
41-54a/DWS	Aluminium	200 x 130 x 84 mm	1,65 kg
0100000LAWa	Stainless Steel	33x16	617 g
0600054WHG	Stainless Steel	10,5x20x2	
050000055	Stainless Steel	M 10	

Information:

The Mounting Bracket for load winch and PLW type DWS has been optimised for user-friendliness. The optimised locking pin 0100000LAWa is supplied pre-assembled with our winches. To ensure system compatibility with older DWS Mounting Brackets, the 0100000LAW locking pin is included with the winches. If new brackets with article number 41-54a/DWS are to be used for existing winches, the locking bolt 0100000LAWa, washer 0600054WHG and hexagon nut 050000055 must also be ordered.