

COMPLETE SYSTEM WITH DEFUSER ENERGY ABSORBERS

It is mandatory to combine FUSE with the DEFUSER energy absorbers (S, L, or RESCUE). These light and compact energy absorbers have been specifically designed for use with FUSE and the maximum arrest shock is 30 % below the standard.

Different absorber lengths and performance parameters guarantee best handling – also for rescue operations and horizontal application.



DEFUSER S
N°. 84016
017 night



DEFUSER L
N°. 84017
017 night



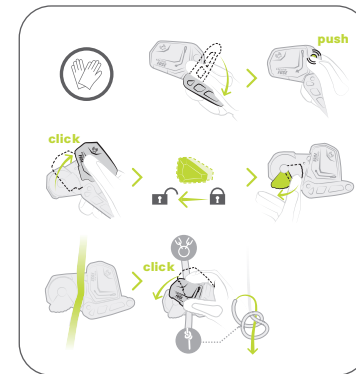
DEFUSER RESCUE
N°. 84018
017 night

Short, compact energy absorber for a payload of 50 to 140 kg. Particularly suitable for climbing and working on ladders and structures. Guiding the securing device close to the body, DEFUSER S guarantees low fall height.

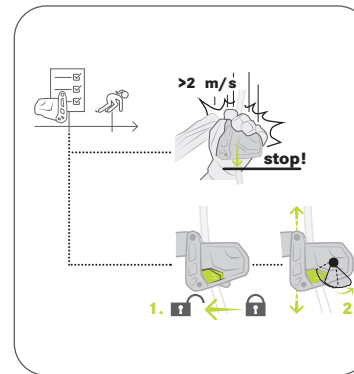
Long, narrow energy absorber for a maximum payload of 50 to 140 kg. The larger distance to the belaying rope allows maximum motion.

Compact energy absorber with a payload of 50 to 220 kg. Especially designed for working with heavy loads and for rescue operations during which the helpless person is attached to the rescuer's system.

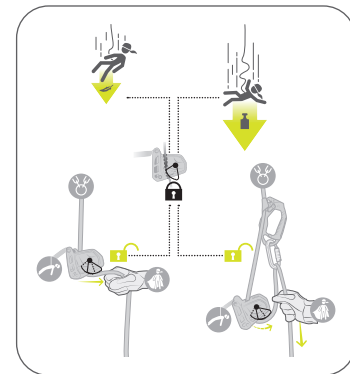
APPLICATION



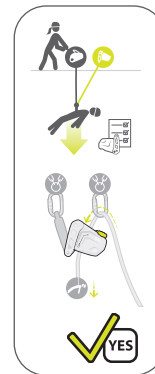
1. Installation



2. Functional test



3. Unlocking upon fall loading



4. Redundant belaying for passive rescuing

EDELRID GmbH & Co. KG
Achener Weg 66
88316 Isny im Allgäu

Phone: +49 7562 981-0
mail@edelrid.de
www.edelrid.com



2913

EDELRID *e*



FUSE

GUIDED-TYPE FALL ARRESTER

- ✓ EN 353-2
- ✓ EN 12841-A
- ✓ RfU 11.075
- ✓ ANSI Z359.15

FEATURES

Runs along incomparably smoothly from the first meter

Integrated RFID chip simplifies documentation of the application

Only securing device in the market for a payload of up to 140 kg that meets all applicable standards in Europe and North America

Easy attachment and detachment from the rope without separation from the karabiner

Rear locking function for taut belaying in the work position

Waiving at a toothed clamping cam reduces wear on the rope and prevents it from tearing in case of overload

Separation of the blocking mechanism and its speed-dependent activator improve reliability and safety - patent application has been filed



FUSE IS REDEFINING THE STANDARDS

FUSE redefines the standards for guided-type fall arresters. It is the only securing device in the market for a payload of up to 140 kg that meets all applicable standards in Europe and North America. From the first meter it moves along the rope with unprecedented ease. This is achieved by a new, sophisticated attachment at the lever arm.

The separation of the blocking mechanism and its speed-dependent activator – a patent application has been filed – improve the reliability and safety of the device. The device reduces wear on the rope, prevents tearing of the rope, and ensures the blocking can be released without completely relieving the load. This is achieved by waiving at a toothed clamping cam. If needed, clamping can be activated by means of a practical lock function.

FUSE can be attached to and removed from the rope without separating it from the karabiner. In connection with the light and compact DEFUSER energy absorbers (S, L, or RESCUE) the maximum arrest shock is 30 % below the standard. Different absorber lengths and performance parameters guarantee best handling – also for rescue operations and horizontal application.

- Only device in the market that meets the standards EN 353-2, EN 12841-A, RfU 11.075, and ANSI Z359.15 for a payload of up to 140 kg – approved for horizontal applications
- Runs along incomparably smoothly from the first meter
- Separation of the blocking mechanism and its speed-dependent activator – a patent application has been filed – improve reliability and safety
- Activation of the clamping cam at a speed exceeding 2 m/s
- Waiving at a toothed clamping cam reduces wear on the rope, prevents tearing of the rope, and ensures the blocking can be released without completely relieving the load
- Arrest function facilitates taut belaying in the working position and prevents sagging of ropes when it is exposed to wind
- Easy attachment and detachment from the rope without separation from the karabiner
- Use of DEFUSER energy absorbers reduces the arrest shock to 30 % below the standard
- For a rope diameter of 10 to 12 mm
- Integrated RFID chip simplifies documentation of the application

N°.	WEIGHT	COLOR	CERTIFICATION
88256	420 g	017 night	EN 353-2 EN 12841-A RfU 11.075 ANSI Z359.15

CERTIFICATIONS

