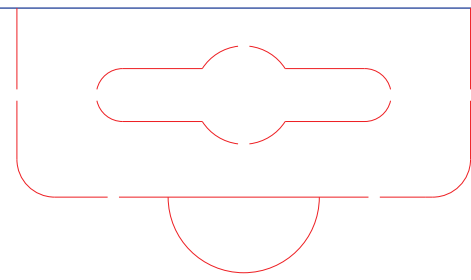
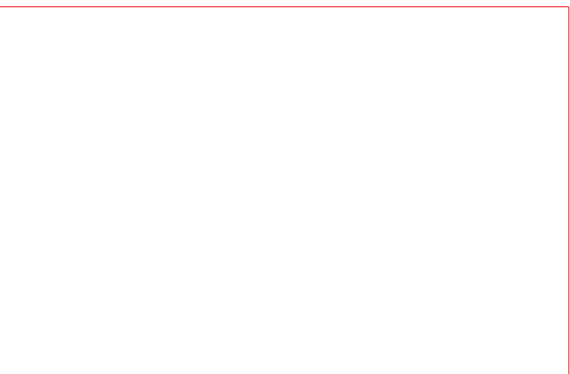
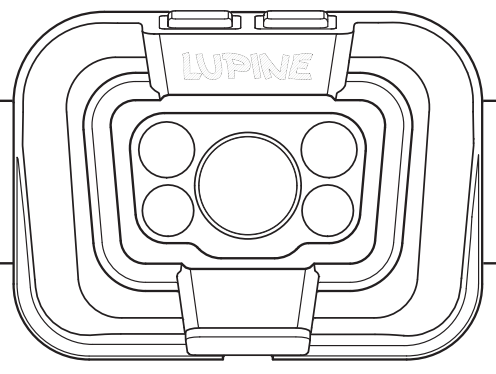


288.25

239.5

120



# LUPINE

# PENTA

  
UP TO 1000 LUMENS  
3x WHITE, 2x RED LEDs  
DIFFUSE, MID, NARROW BEAM  
CONSTANT AND FLASH MODE  
BOOSTMODE

  
MODULAR  
DISMOUNTABLE  
DESIGN

  
QUICK CHARGING  
WITH USB C  
LI-PO BATTERY

  
COLD RESISTANT

  
STRONG ALUMINIUM  
HOUSING, WATERPROOF IP68

  
RUNTIME  
MINIMAL: 1H  
MAXIMAL: 120H



DETAILS & BEAM PICTURES

Lupine lighting systems GmbH, Im Zwiesel 9, D-92318 Neumarkt, Germany; [www.lupine.de](http://www.lupine.de)  
WEEE-Reg.-No.: DE38409963; BattG-Reg.-No.: 21005699  
EC Declaration of Conformity: [www.lupine.de/ce/](http://www.lupine.de/ce/)



0750  
Penta 5700K



44.25

92

45

92

15